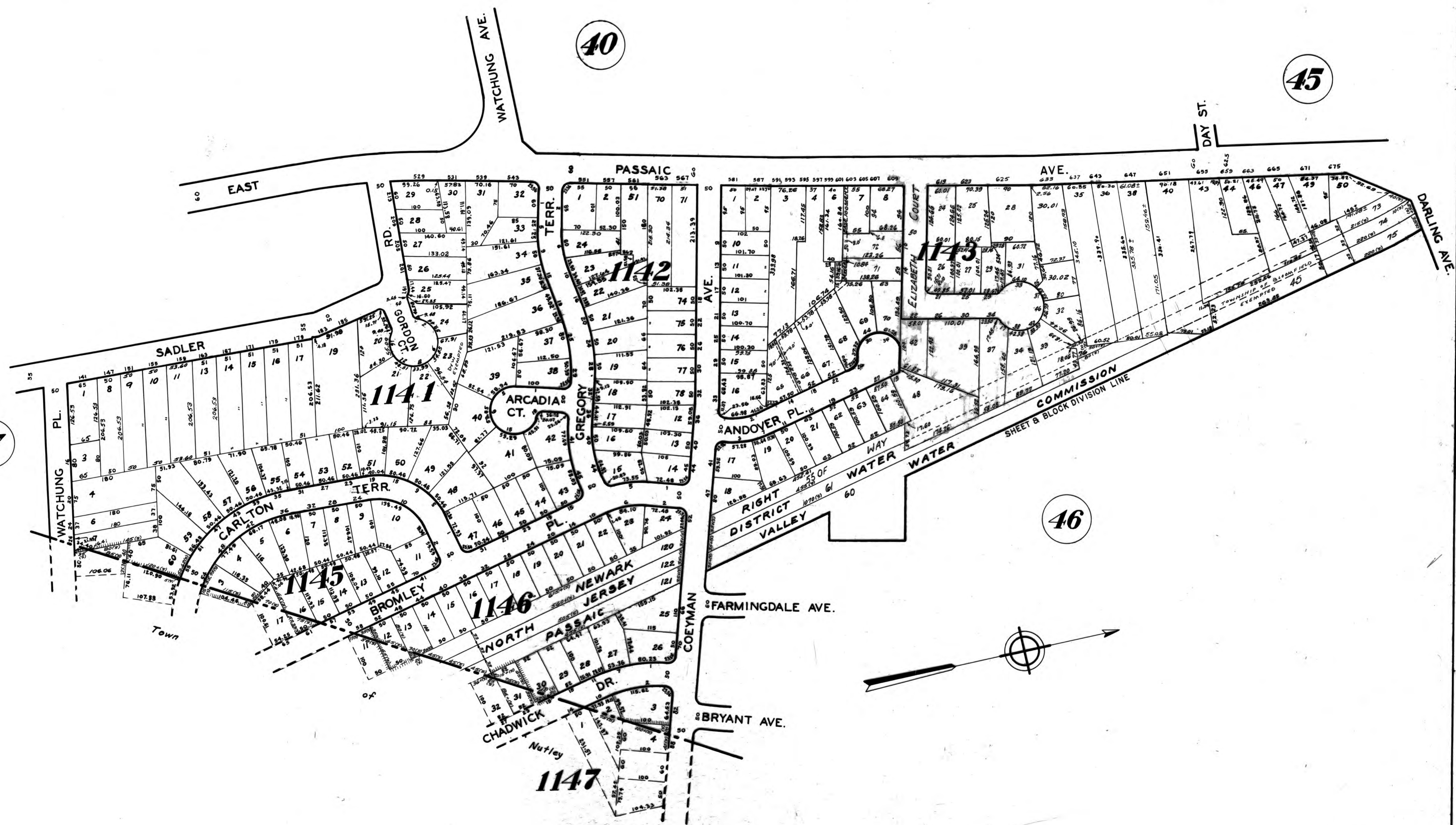


37

40

45

46



NOTE:
 Newark Right of Way
 No Jersey Dist. Water Supply Comm. and
 Passaic Valley Water Commission are
 sub-surface rights.

TAX MAP
 TOWN OF BLOOMFIELD
 ESSEX COUNTY, N.J.
 OFFICE OF TOWN ENGINEER

JAN. 1928	SCALE: 1 IN. = 500 FEET
Revised to	OCT. 1965
	OCT. 1970
	AS OF JAN. 31, 1973
	May 1973
	Nov. 1973
	Dec. 1973
	Jan. 1974
	1-12-1974
	DEC. 1976
	DEC. 1978
	OCT. 10, 1985
	JAN. 22, 1990