

SHEET & BLOCK DIVISION LINE

BROOKDALE PARK  
ESSEX COUNTY PARK COMMISSION  
EXEMPTED  
23.539 ACRES

BROOKDALE PARK  
ESSEX COUNTY PARK COMM.  
EXEMPTED  
1.81 ACRES

BROOKDALE PARK  
ESSEX COUNTY PARK COMMISSION  
EXEMPTED  
15.10 ACRES

1051

39

BROOKDALE PARK  
ESSEX COUNTY PARK COMMISSION  
EXEMPTED  
15.10 ACRES

35

34

1058

TOWN OF MONTCLAIR

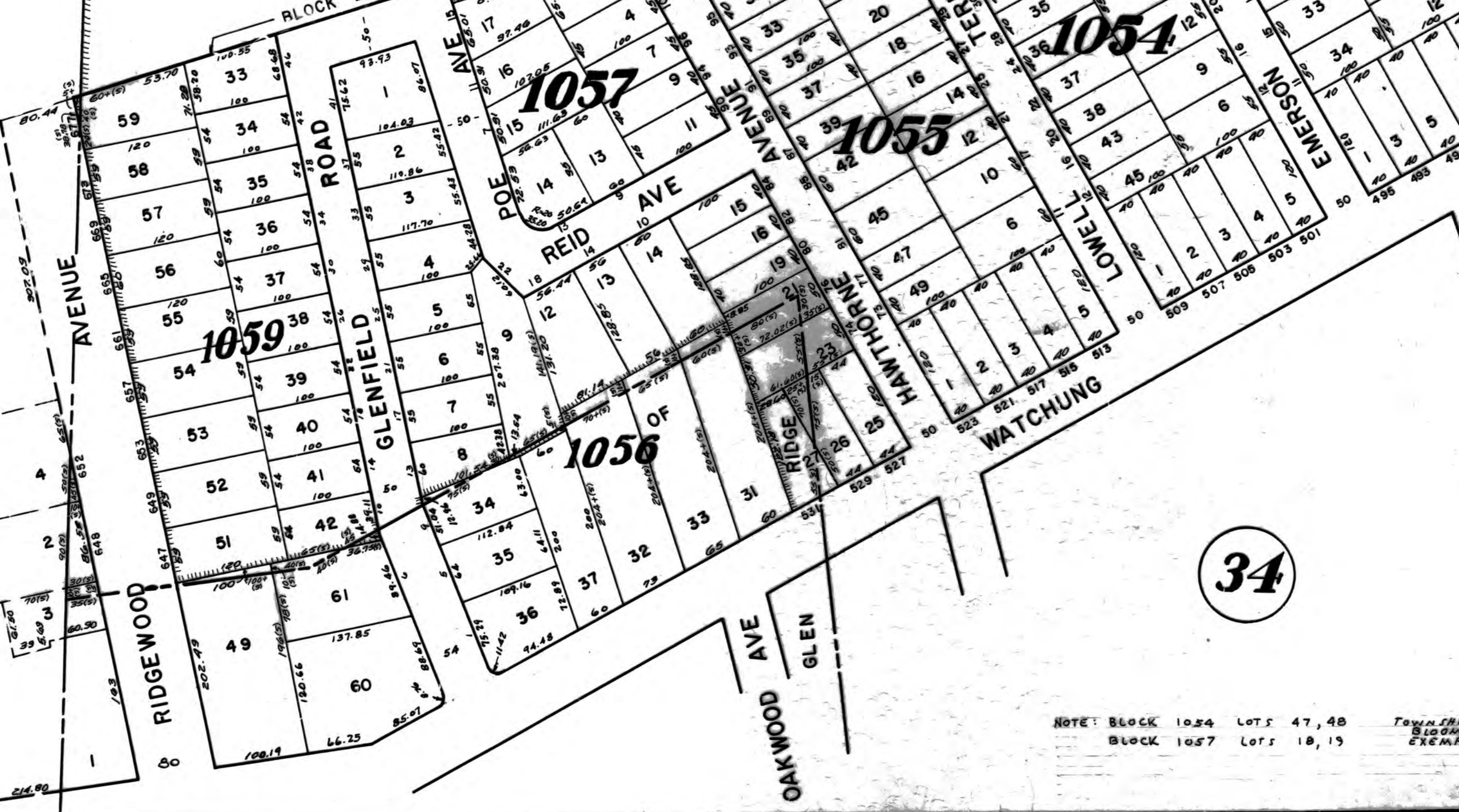
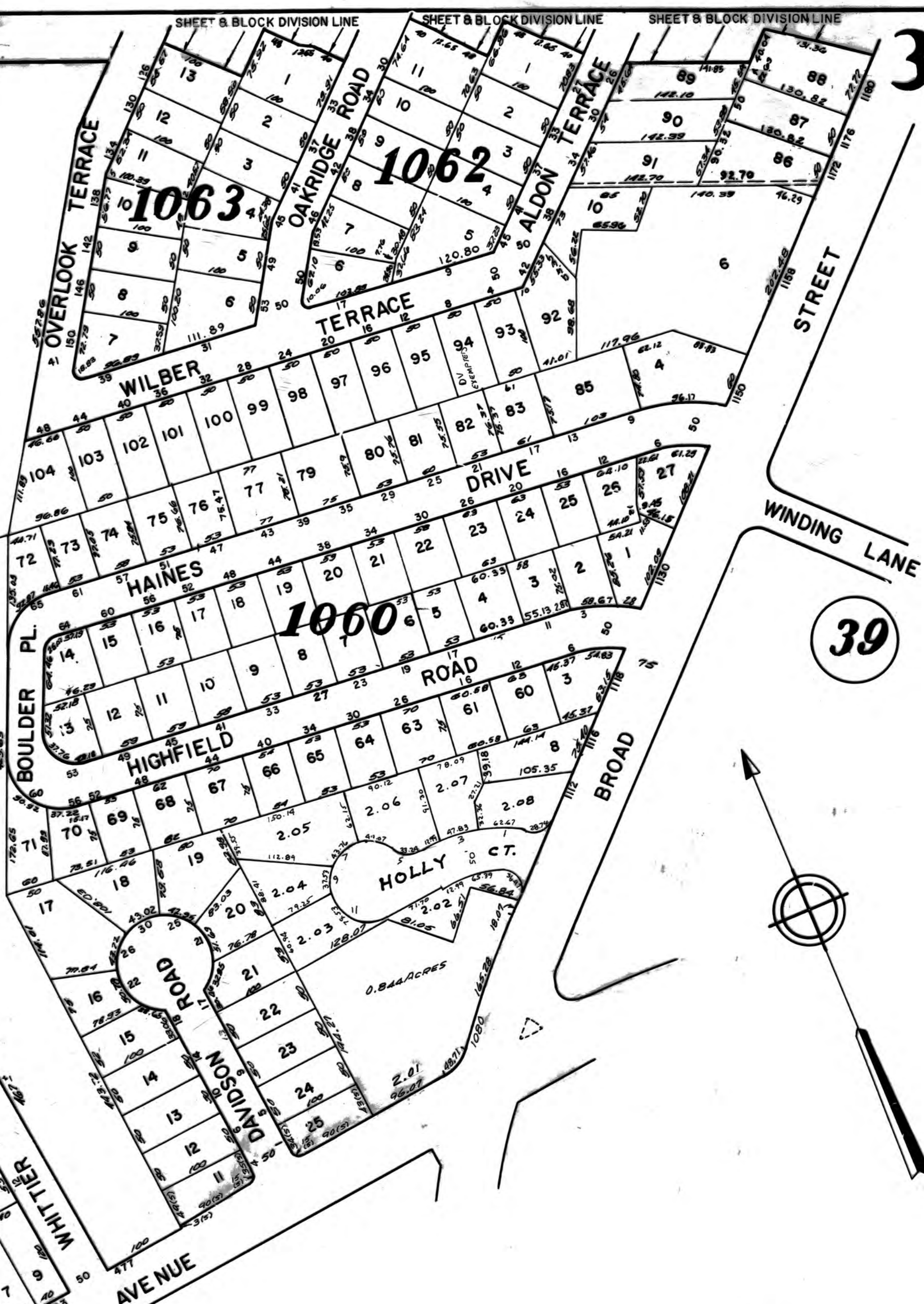


BROOKDALE PARK  
ESSEX COUNTY PARK COMM.  
EXEMPTED  
1.81 ACRES

BROOKDALE PARK  
ESSEX COUNTY PARK COMMISSION  
EXEMPTED  
15.10 ACRES

BROOKDALE PARK  
ESSEX COUNTY PARK COMMISSION  
EXEMPTED  
23.539 ACRES

BROOKDALE PARK  
ESSEX COUNTY PARK COMM.  
EXEMPTED  
1.81 ACRES



NOTE: BLOCK 1054 LOTS 47, 48  
BLOCK 1057 LOTS 18, 19  
TOWNSHIP OF BLOOMFIELD  
EXEMPTED

TAX MAP  
TOWN OF BLOOMFIELD  
ESSEX COUNTY, N.J.  
OFFICE OF TOWN ENGINEER  
JAN 1928 SCALE 1 IN=100 FEET  
REVISED TO: OCT. 1965  
OCT. 1970  
AS OF JAN. 31, 1978  
" SEPT. 1978  
" JUNE 6, 1990  
" JUNE 29, 1999  
" OCT. 5, 1999