

31

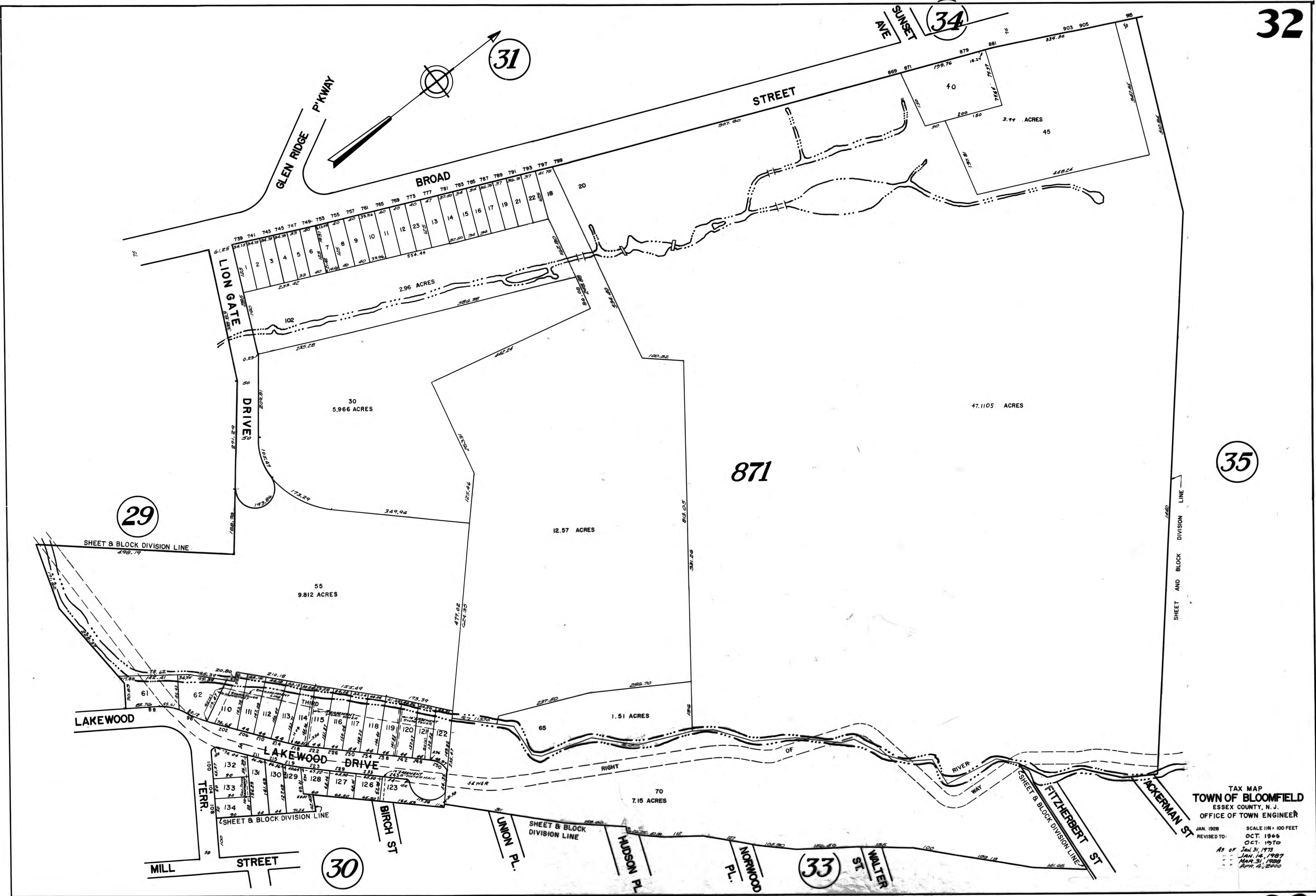
34

35

29

30

33



TAX MAP  
**TOWN OF BLOOMFIELD**  
 ESSEX COUNTY, N. J.  
 OFFICE OF TOWN ENGINEER

JAN. 1928 SCALE 1" = 100 FEET  
 REVISED TO: OCT. 1966  
 OCT. 1970  
 AS OF Jan. 31, 1973  
 JAN. 14, 1987  
 MAR. 31, 1988  
 APR. 4, 2000