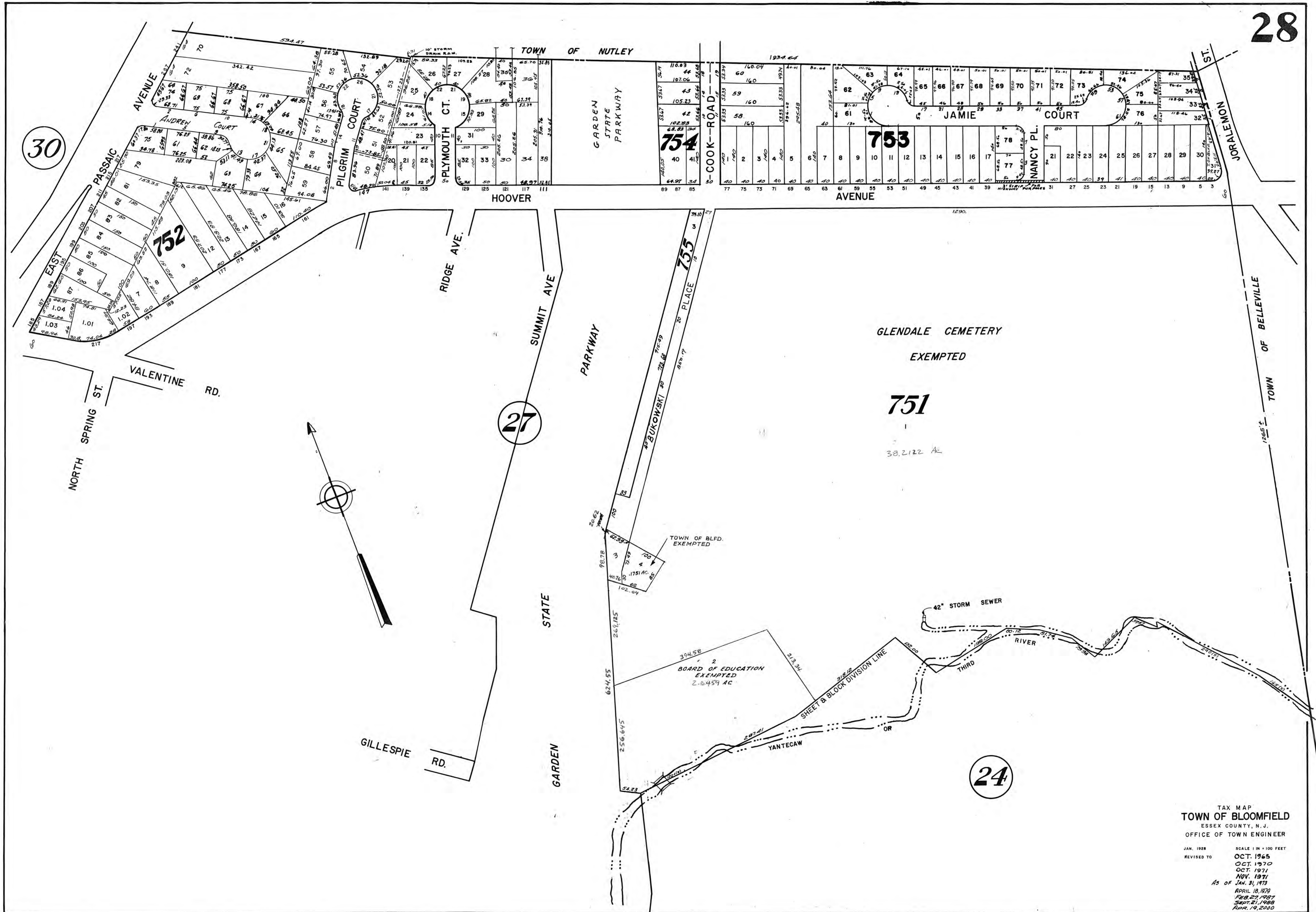


30

27

24



TAX MAP  
 TOWN OF BLOOMFIELD  
 ESSEX COUNTY, N.J.  
 OFFICE OF TOWN ENGINEER

JAN. 1928  
 REVISOR TO  
 OCT. 1965  
 OCT. 1970  
 OCT. 1971  
 NOV. 1971  
 AS OF JAN. 31, 1973

SCALE 1 IN = 100 FEET  
 APRIL 18, 1979  
 FEB. 27, 1987  
 SEPT. 21, 1988  
 APR. 19, 2000